



innovative guide software
at paperback guide prices

The Peck Application – **Getting Started**

Eduneer, LLC
Greg Sepesi
2008 June 01

1. Overview	2
2. Setup	2
2.1 Multimedia	3
2.2 Localization	3
3. The Look of Lists	4
3.1 The AOU List	4
3.2 The Document List	6
3.3 The Audio List	8
3.4 The BCR List	9
4. Check Please!	10
5. Exercises	15
Appendix. Change Log	16

1. Overview

The closing paragraph of *The Origin of Species* begins,

“It is interesting to contemplate a tangled bank, clothed with many plants of many kinds, with birds singing on the bushes, with various insects flitting about, and with worms crawling through the damp earth, and to reflect that these elaborately constructed forms, so different from each other, and dependent upon each other in so complex a manner, have all been produced by laws acting around us.”

Although space limitations require paperback field guide designers to simplify and isolate the description of species, advances in memory technologies are enabling a more connected description of species in electronic field guides. How to best manage the added complexity remains an open problem. However, taking hints from the tangled bank, successful electronic field guide designs are likely to be efficient and adaptive.

About 80% of the usage of the Peck application can be summed up in one sentence: “Scroll to a species by entering part of the species name, highlight the species, look at the documentation icons available and tap one to read its documentation.” The remaining 20% is useful enough to warrant browsing the documentation, but arcane enough to quickly forget.

This document describes how to use the Peck application’s basic capabilities. The more advanced capabilities are described in other documentation available at <http://www.eduneer.com/peck>. You would get the most out of this document by reviewing it while simultaneously running the Peck application so you can display the described lists and do the exercises.

2. Setup

The Peck bird information manager consists of two components:

- the Peck multimedia, which you copy to your SD card, and
- the Peck application, which you install by running the peck-Installer.prc installer application.

These components are distributed separately because users typically update the relatively small Peck application more frequently than the relatively large Peck multimedia. Although it is simplest to copy the Peck multimedia to your SD card before installing the Peck application, you can also install the Peck application first, provided you select the AOU list’s ‘Select/Link to Multimedia’ menu item after you copy the Peck multimedia to your SD card.

2.1 Multimedia

The most convenient way to get the Peck multimedia onto an SD card is to buy an SD card with the multimedia already on it. In addition to the multimedia, a preprogrammed SD card also has

- the installers for the Peck and SI applications,
- an auto start application that starts the Peck application whenever you insert the SD card, and
- the most recent Wikipedia articles.

To install and start the Peck application using a preprogrammed SD card, just insert the card.

The cheapest way to get the multimedia onto an SD card is to download it and copy it to your SD card. Doing it yourself is recommended if you are comfortable transferring a substantial amount of multimedia from an FTP server to your PC and then to your SD card. For instructions, see

- http://www.eduneer.com/peck/download_instructions.pdf and
- http://www.eduneer.com/peck/copy_instructions.pdf

2.2 Localization

The default localization of the Peck application is controlled by the contents of your SD card's /Eduneer/Admin/location.txt file.¹ Initially it is set to the capitalized, two-letter, abbreviation of your state. However to improve the focus of the localization down to the level of a single² Bird Conservation Region,

- switch to the BCR list (i.e., tap the list selector in the lower left corner and select BCR),
- uncheck all but your particular BCR, and
- select the BCR list's 'Select/Checked BCRs As Default' menu item.

The Peck application's default view (i.e., the initial view and the view displayed whenever you select the 'Start Over' menu item) is the document list, sorted by the likelihood (according to eBird statistics) of species being sighted in your location (as specified in your SD card's /Eduneer/Adin/location.txt file) during the current week of the year. Some users will be content with keeping the Peck application in this default view: It automatically updates as the weeks change. However, if you prefer a different sorting order, uncheck the box in the Peck application's title bar.

¹ The location.txt file is initially set by Eduneer to the state or province from which you order the Peck multimedia. If you are using the sample Public Domain multimedia, you can manually create an /Eduneer/Admin/location.txt file to contain the capitalized, two-letter, abbreviation for your state (e.g., VA for Virginia).

² Some users near the border of a BCR may prefer to check multiple BCRs as the default location.

3. The Look of Lists

The Peck application organizes bird reference information into four visually simple but highly integrated lists:

- **AOU list** – defined by the AOU³ (American Ornithologists’ Union), is a hierarchical classification of the birds that occur in North America,
- **document list** – defined by the USGS Patuxent Wildlife Research Center⁴, is approximately the species that breed in North America,
- **audio list** – the list of available recordings,
- **BCR list** – defined by the North American Bird Conservation Initiative⁵, is a list of the 66 BCRs (Bird Conservation Regions) covering the continent of North America

At the bottom left of each list is a list selector. To switch to another list, tap the list selector and select another list.

At the top of each list is a series of numbers such as “150-159 of 2232 [2232]” defining the range of the currently displayed page (e.g., 150-159), the total number of items in the list (e.g., 2232), and in brackets the number of items that are checked.⁶

3.1 The AOU List

The first list in the Peck application is the AOU list. As defined by the American Ornithologists’ Union, it lists the species of birds that occur in North America. The Peck application initially lists the common names of species, but you can change that by selecting the ‘View/Scientific Name’ menu item.

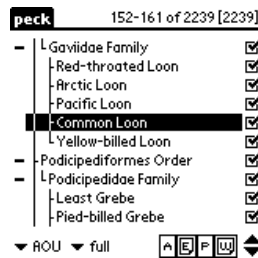


Figure 3-1-1. AOU List

³ <http://www.aou.org/>

⁴ <http://www.mbr-pwrc.usgs.gov/id/framlst/infocenter.html>

⁵ <http://www.nabci-us.org>

⁶ Checks are used in a variety of ways, to be described later in this document’s section entitled “Check Please!”

The left side of the AOU list can have ‘+’ and ‘-’ symbols. These symbols always occur by items displaying the list’s hierarchy, as opposed to displaying the list’s species. Tapping on a ‘+’ expands the hierarchy to list more items and tapping on a ‘-’ collapses the hierarchy to list fewer items

When you highlight a species in the AOU list, a few icons can appear at the bottom of the list:

- **A** appears if at least one recording of the highlighted species is available. Tapping the **A** plays the recording(s).⁷
- **E** appears if etymology of the highlighted species name is available. Tapping the **E** displays that etymology.⁸
- **P** appears if at least one photograph of the highlighted species is available. Tapping the **P** displays one of those photographs.⁹
- **W** appears if a Wikipedia article about the highlighted species is available. Tapping the **W** displays that article.

Also at the bottom of the AOU list is an AOU mode selector. By selecting anything other than “AOU”, you filter the AOU list as well as the document list and the audio list. Because filtering is not a basic capability, beginners should avoid changing the AOU mode selector to anything other than “AOU”. Beginners should also avoid

- unchecking the boxes on the right of the AOU list because doing so can filter items in the document and audio lists,
- double tapping a species in the AOU list because doing so launches the Species Inventory application.

There are precautions in other lists as well. Not to worry though, you don’t need to remember them: the Peck application displays warning messages. For example, Figure 3-1-2 shows the warning message the Peck application displays when you attempt to uncheck an item in the AOU list. Once you are familiar with the Peck application, you can disable these warning messages by tapping the “I’m no novice!” button within the warning message or by selecting the AOU list’s ‘View/Warnings for Novices’ menu item.

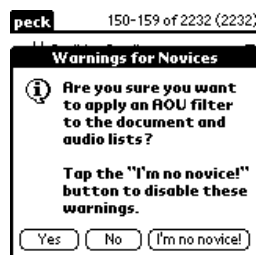


Figure 3-1-2. Warnings For Novices

⁷ The Peck multimedia may include several recordings of the same species and tapping the ‘A’ icon plays them all, one after another. If you want to play just one recording at a time, switch to the audio list.

⁸ The etymology will be about the common name if the AOU list is displaying the common name of species, and the etymology will be about the scientific name if the AOU list is displaying the scientific name of species.

⁹ The Peck multimedia may include several photographs of the same species and tapping the ‘P’ icon displays just one of them. However once a photograph is displayed, you can easily scroll through the other photographs of the same species by pressing the top or bottom edge of the 5-way navigator button.

3.2 The Document List

The second list in the Peck application is the document list, listing the 696 species documented by the USGS Patuxent Wildlife Research Center. It is roughly the list of bird species that breed in North America.

As with the AOU list, common names are the default. If you prefer scientific names, select the ‘View/Scientific Name’ menu item. Unlike the AOU list, the document list is not hierarchical: it is just a list of species.



Figure 3-2-1. Document List (in alphabetical order)

To see a photograph associated with a highlighted species name, tap it or press the center of the 5-way navigation button.¹⁰

If you highlight a species in the document list (e.g., by tapping it), several icons can appear at the bottom of the list:

- **A** appears if at least one recording of the highlighted species is available. Tapping the **A** plays the recording(s).¹¹
- **E** appears if etymology of the highlighted species name is available. Tapping the **E** displays that etymology.¹²
- **I** appears if species identification tips are available. Tapping the **I** displays those identification tips.
- **L** appears if a life history description is available. Tapping the **L** displays that life history description.
- **P** appears if at least one photograph of the highlighted species is available. Tapping the **P** displays one of those photographs.¹³ Figure 3-2-1 shows that the **P** is highlighted when the

¹⁰ As mentioned in the previous footnote, once you display one photograph of a species you can easily scroll to the other photographs of that species. It is worth noting that the species photograph that is displayed first is under your control. The photographs of a species are sorted in reverse chronological order of the specimen (e.g., adult, immature, chick, egg) and initially the first photograph displayed in this list when you tap the ‘P’ icon is of the adult. However the Peck application remembers which photograph of the species you viewed last, and returns you to that photograph the next time you tap the ‘P’ icon for that species. Therefore, if you want to see the adult specimen when you tap the ‘P’ icon, you should scroll back to the adult specimen photograph before exiting a species’ photographs.

¹¹ The Peck multimedia may include several recordings of the same species and tapping the ‘A’ icon plays them all, one after another. If you want to play just one recording at a time, switch to the audio list.

¹² The etymology will be about the common name if the AOU list is displaying the common name of species, and the etymology will be about the scientific name if the AOU list is displaying the scientific name of species.

common loon is highlighted in the document list. This means there are other species that the identification tips mention as looking similar. To determine which species are similar looking, select the 'Check/Clear All' menu item and then the 'Check/Similar Looking' menu item. In this case, four species get checked (i.e., common loon, pacific loon, red-throated loon, yellow-billed loon) and you can quickly scroll to them in the document list by pressing the left or right edges of the 5-way navigator button.¹⁴

- **W** appears if a Wikipedia article is available. Tapping the **W** displays the Wikipedia article text.

Comparing the AOU list and the document list, the document list has the four document icons that are in the AOU list (i.e., 'A', 'E', 'P' and 'W') plus two more: the **I**dentification tips icon ('I') and the **L**ife history icon ('L'). Another difference is that the species in the AOU list always stay in the same order, but there are many sorting options for the species in the document list. Select the document list's 'Select/Sort Order' menu item to see the sort order options available.

The first look at the sort order options is somewhat daunting: half the options are labeled with obscure abbreviations, the others with words too terse to understand. The good news is that you can master sorting by learning just five of the options:

- "abc" puts the species in alphabetical order. An advantage of alphabetical order is that you can search for a species in the list as you would search for a word in a dictionary.
- "AOU" puts the species in AOU order (i.e., the same order as species appear in the AOU list). An advantage of AOU order is that families of species are grouped together.
- "inc" puts the list in increasing (i.e., normal) order. Typically, increasing order is used with lists sorted in alphabetical or AOU order.
- "dec" puts the list in decreasing (i.e., reverse) order. Typically, decreasing order is used with lists sorted according to "likelihood in checked BCRs" or any of the species vulnerability scores (e.g., Relative Abundance).

The other sort order options are important and worth exploring, but you will probably use them less often, making their obscure labels even more difficult to learn and remember. Fortunately, you can see a sort order cheat-sheet by tapping the 'i' (for information) icon in the upper right corner of the sort order options dialog.

As a final note about the document list before moving on to the audio list, you can use the document list to setup and start an automated slide show. To setup the slide show, check the species you want included in the slide show and select the slide show options via the 'Select/Slide Show Options' menu item. To start the slide show, tap the already highlighted document list icon. The slide show options, shown in Figure 3-2-3.

¹³ The Peck multimedia may include several photographs of the same species and tapping the 'P' icon displays just one of them. However once a photograph is displayed, you can easily scroll through the other photographs of the same species.

¹⁴ The left and right edges of the 5-way navigator button are what you press to scroll to the previous and next checked item in the list. More tips about scrolling in the Peck application are documented in PT_Scroll.pdf

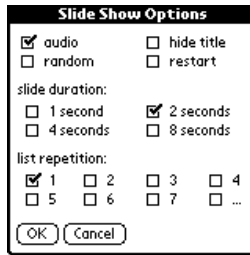


Figure 3-2-3. Slide Show Options

3.3 The Audio List

The third list in the Peck application is the audio list, listing the recordings available. In appearance, the audio list is similar to the document list. Like the document list, the same filtering and sorting capabilities are available in the audio list. Similar to the document list, you can use the audio list to setup and start an automated playback of recordings in a play list.¹⁵ And like the AOU and document lists, the audio list can show common names or scientific names, but it can also show mnemonics (see the ‘View/Mnemonic’ menu item).



Figure 3-3-1. Audio List (in alphabetical order)

To play a highlighted recording, tap it or press the center of the 5-way navigation button. If you highlight a species¹⁶ in the audio list (e.g., by tapping on it), several icons can appear at the bottom of the list:

- **A** always appears. Tapping the **A** plays all the recordings of the highlighted species.¹⁷
- **D** appears if a description of the highlighted recording is available (e.g., call of a male flying in from the ocean back to a nest on the shore). Tapping the **D** displays that description.
- **I** appears if identification tips are available (e.g., the song typically ends in a downward slur). Tapping the **I** displays those identification tips.

¹⁵ The automation in the audio list is called a play list, a name often associated with a queue of music. The automation in the document list is called a slide show because it is geared to showing photographs, even though playing audio is an option.

¹⁶ In the description of the audio list, an item in the list is sometimes called a species and sometimes called a recording. To be more accurate, “highlight a species” should be written “highlight a species name label of a recording or a vocalization mnemonic label of a recording” but that doesn’t seem to make the description any clearer.

¹⁷ The Peck multimedia may include several recordings of the same species and tapping the ‘A’ icon plays them all, one after another. If you want to play just one recording at a time, highlight the recording and either press the 5-way navigation button’s center or tap the highlighted recording.

- **M** appears if a mnemonic is available (e.g., “chick burr”). Tapping the **M** displays that mnemonic. If the mnemonic is a mnemonic phrase as in “Who cooks for you all?” it is displayed enclosed in quotation marks. Otherwise it is a mnemonic description (e.g., bouncing ping pong ball) and is not enclosed in quotation marks.
- **P** appears if at least one photograph of the recorded species is available. Tapping the **P** displays one of those photographs.

Also at the bottom of the list are a volume control, a downward pointing Peck icon, and a check box labeled ‘x’. The volume control is self-explanatory. The Peck icon and the ‘x’ check box are explained in the document entitled ‘How to Identify Birds Using the Peck Application’ at http://www.eduneer.com/peck/peckdoc_identify.pdf.

3.4 The BCR List

The fourth list in the Peck application is the BCR list consisting of North America’s 66 Bird Conservation Regions as defined by the North American Bird Conservation Initiative. These regions are constrained by environmental boundaries (e.g., a mountain range) rather than political boundaries (e.g., state border lines).



Figure 3-4-1. BCR List

To see a detailed description of a highlighted BCR, tap it or press the center of the 5-way navigation button.

The BCR list is the simplest of the four lists. It is not a hierarchical list that expands or collapses, it is not capable of being sorted, and it cannot present any multimedia. Yet, the BCR list is rather important because it can localize the other lists. For details on how to use the BCR list to localize the Peck application, see the document entitled ‘How to Identify Birds Using the Peck Application’ at http://www.eduneer.com/peck/peckdoc_identify.pdf.

4. Check Please!

Each list in the Peck application has a column of checks. If you want to get the most out of the Peck application, you should learn how to use the checks ... even though they can initially be confusing because the same checks are used in several different contexts. These contexts are shown in Figure 4-1, followed by examples.

CONTEXT	AOU LIST	DOCUMENT LIST	AUDIO LIST	BCR LIST
AOU status	✓			
alarm clock			✓	
automation		✓	✓	
combination of sorts		✓	✓	
document search	✓	✓	✓	
favorites		✓	✓	
filter	✓			✓
global find	✓	✓	✓	✓
reports	✓	✓	✓	✓
scroll	✓	✓	✓	✓
similar media		✓	✓	

Figure 4-1. Contexts of List Checks

AOU status – The AOU publishes status information along with their hierarchical list of species. The status information classifies species as accidental, extinct, Hawaiian, introduced, misplaced, or non-breeding visitor. For example, to determine which species in the AOU list are introduced,

- switch to the AOU list,
- select the ‘Check/Clear All’ menu item,
- select the ‘Check/AOU Status’ menu item,
- check only ‘introduced’ and tap the ‘OK’ button.

The AOU list now has 62 items checked. To scroll through the 62 introduced species, highlight any item (checked or not) in the AOU list and press the left/right edge of the 5-way navigator button to scroll to the previous/next check.¹⁸ By the way, typically after using the results of the ‘Check/AOU Status’ menu item, you would select the ‘Check/All’ menu item so that the AOU filter does not empty the document and audio lists. However, don’t do that here because the results from this example will be used in the automation example that follows.

alarm clock – There is an alarm clock option to play randomly selected recordings.¹⁹ The random selection is made from the recordings that are checked in the audio list.

¹⁸ You could also scroll to the previous or next checked item by using the ‘View/Previous Check’ menu item or the ‘View/Next Check’ menu item.

¹⁹ A random playback order is an effective counter measure to heavy sleepers capable of sleeping through repetitive sounds.

automation – The document and audio lists can automate the presentation of multimedia. The document list can present slide shows that flip through photographs every few seconds, and the audio list can loop through a play list of recordings. For example, to listen to the available recordings of introduced species,

- start with the AOU list results from the AOU status example,²⁰
- select the AOU list's 'Check/Branches' menu item,²¹
- switch to the audio list,
- select the audio list's 'Select/Play List Options' menu item,
- check only list repetition '1', tap the 'OK' button, and
- select the audio list's 'Check/All' menu item,²²
- tap the already highlighted audio list icon to play the recordings of introduced species.

combination of sorts – The document and audio lists can be sorted just one way at a time. However there are times when it is useful to be able to sort the partial results from a previous sort. For example, to determine the incubation times of three introduced species that breed in North America and are currently most common in your BCR,²³

- start with the audio list results from the previous example,²⁴
- switch to the BCR list,
- select the BCR list's 'Check/Clear All' menu item,
- scroll to and check your BCR,
- switch to the document list,
- tap the 'Filter' button,
- select the 'location filter' form,
- check 'BCR AOU mode', 'week of year BCR filter', and 'week of year BCR sort',
- tap the 'OK' button,
- select the document list's 'Check/All' menu item,
- select the document list's 'Select/Sort Options' menu item,
- check the unlabeled check box in the document list's title bar,
- scroll to and highlight the species with the third largest seasonal sighting likelihood,
- select the 'Check/Clear Below Highlight' menu item,
- select the 'Select/Sort Options' menu item again,
- check max 'incubate', check 'dec', and tap the 'OK' button.

At this point, the most commonly sighted introduced species are checked and sorted according to the maximum incubation time (unit: days). Scroll through the list to see the incubation times of the checked species.²⁵

²⁰ Only the 62 introduced species should be checked in the AOU list.

²¹ The reason for selecting the 'Check/Branches' menu item is to setup an AOU filter that filters out all species except introduced species from the document and audio lists. A more detailed description of AOU filtering is in [PT_Identify.pdf](#)

²² The recordings must be checked to be played in the play list.

²³ Don't ask me why anyone would want to know such a thing. I suppose the point is that complex queries are relatively easy when the bird reference information is integrated.

²⁴ The AOU filter that was setup to show only introduced species in the audio list had the same effect on the document list.

²⁵ When I performed this test, the results were 19 days for the rock pigeon, 14 days for the European starling, and 13 days for the house sparrow.

document search – The icons at the bottom right of the AOU, document, and audio lists denote that the highlighted species is associated with some documentation (e.g., ‘E’ for etymology). To see which species in a list has a certain type of documentation, it would be possible to manually scroll through and highlight each species in the list while looking for the icon associated with that document to appear. However, for lengthy lists, a more efficient approach is to have the Peck application check the species that have the documentation of interest. For example, to determine which of the recordings of introduced species have mnemonics available,

- start with the document list results from the previous example,
- switch to the audio list,²⁶
- select the audio list’s ‘Check/Clear All’ menu item,
- select the ‘Check/Document’ menu item,
- check ‘vocalization mnemonic’, and tap the ‘OK’ button.

The result is one checked species: the Eurasian-collared dove is the only introduced species recording that has a mnemonic available.²⁷

favorites – The checks in the document and audio lists are used in so many different contexts that they are often overwritten. The check favorites are persistent checks so users can compile long-term lists. For example, suppose that you want to keep track of the vocalizations that sound stranger-than-fiction in order to play them some day for the amusement of others. To add the first couple recordings of the great-tailed grackle to your stranger-than-fiction audio list,

- switch to the AOU list,
- select the AOU list’s ‘Check/All’ menu item,²⁸
- switch to the audio list,
- select the audio list’s ‘Check/Clear All’ menu item,
- scroll to the great-tailed grackle recordings,
- check the first two great-tailed grackle recordings,
- select the ‘Check/Favorites’ menu item to check the previous favorites in addition to the two great-tailed grackle recordings,
- select the ‘Check/Save As Favorites’ menu item to save the new favorites including the two great-tailed grackle recordings.

filter – Filtering is capability described more in PT_Identify.pdf, but a quick example is given here. To filter the document list to show only birds of prey,

- switch to the AOU list,
- select the AOU list’s ‘Check/Clear All’ menu item,
- select the ‘Check/Visual Category’ menu item,
- check ‘bird of prey’ and tap the ‘OK’ button,
- switch to the document list.

²⁶ The audio list still is filtered to have only introduced species.

²⁷ By the way, the mnemonic for the vocalization of the Eurasian-collared dove is part of the etymology of its scientific name.

²⁸ This is done to remove the AOU filter that restricted the document and audio lists to show only introduced species.

global find – The Palm OS global find often finds more than one item during a search. Check the ‘check found records’ checkbox in the Text Search Options dialog²⁹ so all the found items get checked in the Peck application. For example, to check all the species in the document list that have ‘eye ring’ mentioned in their identification tip,

- switch to the AOU list,
- select the AOU list’s ‘Check/All’ menu item,³⁰
- switch to the document list,
- select the document list’s ‘Check/Clear All’ menu item,
- select the ‘Select/Text Search Options’ menu item,
- check ‘Identification Tips’, check ‘check found records’, and tap the ‘OK’ button,
- tap the Palm OS Global Find icon,³¹
- enter the text ‘eye ring’ and tap the ‘OK’ button,
- keep tapping the ‘Find More’ button until there are no more matches for ‘eye ring’ found,
- tap the ‘Cancel’ button.

There should be 78 species checked in the document list, each having ‘eye ring’ mentioned in their identification tips. The combination of Palm OS Global Find and the Peck application checks can be helpful when identifying a species and is important enough to warrant another example, in a different list. As another example, to check all the BCRs in the BCR list that have ‘mountain’ mentioned in their BCR description,

- switch to the BCR list,
- select the BCR list’s ‘Check/Clear All’ menu item,
- select the ‘Select/Text Search Options’ menu item,
- check ‘BCR Descriptions’, check ‘check fund records’, and tap the ‘OK’ button,
- tap the Palm OS Global Find icon,
- enter the text ‘mountain’ and tap the ‘OK’ button,
- keep tapping the ‘Find More’ button until there are no more matches for ‘mountain’ found,
- tap the ‘Cancel’ button.

There should be 27 BCRs checked in the BCR list, each having ‘mountain’ mentioned in their description.

²⁹ The Text Search Options dialog is accessible from the ‘Select/Text Search Options’ menu item in any of the lists.

³⁰ This removes the previous AOU filter that restricted the document and audio lists to show only birds of prey.

³¹ The Palm OS Global Find icon is a magnifying glass, often by the lower right corner of the Graffiti area.

reports – Reports are a way to transfer the results displayed by the Peck application to other applications such as a spreadsheet or an email application. To create a tab delimited text file of the common and scientific names of the species currently checked in the document list (i.e., the species that have ‘eye ring’ mentioned in their identification tips),

- switch to the document list,
- select the ‘Select/Report Options’ menu item,
- check ‘scientific name’, check ‘common name’, check ‘tab’, check ‘VFS text’, check ‘generate’, and tap the ‘OK’ button.

The Peck application then generates a file named report.txt in your SD card’s ‘/Eduneer/Reports/Peck’ directory. The report contains one line of tab delimited text for each checked species and can be easily imported into a spreadsheet application.

scroll – Often checks are sparsely distributed throughout a list. Although scrolling a page at a time while looking for checks is a possible approach to scrolling to the previous/next check in the list, the Peck application offers a more efficient approach that is implemented in every list in the Peck application: check-to-check scrolling. To use the Peck application’s check-to-check scrolling

- highlight an item in the list (checked or not),
- press the left/right side of the 5-way navigation button to scroll to and highlight the previous/next checked item in the list.³²

similar media – Most field guide group together similar species. A difficulty in field guide design is deciding which attributes should be considered when grouping similar species. Color? Habitat? Size? Of course, field guide applications can offer more grouping capabilities than paperback field guides. The Peck application offers many sorting options to group species within a list. As yet another method of grouping species, you can use the checks in the document and audio lists. In the document list, the ‘Check/Similar Looking’ menu item checks species that are similar in appearance.³³

³² Alternatives to pressing the left and right edges of the 5-way navigation button are selecting the ‘View/Previous Check’ and ‘View/Next Check’ menu items.

³³ Staying within the limits of being a compilation of reference information rather than a source of it, the Peck application uses the similar looking species mentioned in the identification tips published by the Patuxent Wildlife Research Center.

5. Exercises

Exercise 1 – Switch Lists. Switch from list to list by using the list selector at the lower left portion of the screen. Highlight a species by tapping it in a list. Then see how the highlight is maintained when you switch from list to list.

Exercise 2 – Slide Show. If not already displayed, switch to the document list (i.e., ‘doc list’). Then start the slide show of checked species by selecting the ‘View/Run Slide Show’ menu item. You can stop the slide show by pressing the center of the 5-way navigator button or by selecting the ‘View/Return to List’ menu item. Uncheck items in the document list and verify that only checked items are included in the slide show.

Exercise 3 – Play List. If not already displayed, switch to the audio list. Then start the play list of checked species by selecting the ‘View/Run Play List’ menu item. Similar to the slide show, you can stop the play list by pressing the center of the 5-way navigator button or by tapping the ‘A’ icon. Uncheck items in the audio list and verify that only checked items are included in the play list.

Appendix. Change Log

2008 June 01

- Changed 'Select/Next Check' menu item 'View/Next Check'.
- Changed 'Select/Previous Check' menu item to 'View/Previous Check'.

2008 May 29

- Expanded section '1. Overview' with a quote from Charles Darwin.
- Reduced section '2. Setup' by removing special installation instructions for LifeDrive users. Those special installation instructions are still in the readme.txt notes distributed with the Peck application.

2008 January 11

- Throughout document, changed the phrase 'electronic field guide' to 'field guide application'.
- Throughout document, updated figures.

2007 December 08

- In section '2. Setup', removed reference about monthly application updates.

2007 November 05

- Updated section '1. Overview.'
- Throughout document, updated figures.
- In section '2. Setup', added an advantage aside about the importance of updates.
- In section '2. Setup', removed all references about the option of receiving multimedia on CD, because that option has been discontinued due to lack of popularity (apparently the two options of downloading and preloaded SD card are sufficient).

2007 April 07

- Simplified section '2. Setup' to match the setup description in the readme.txt that is distributed with the Peck application.

2007 January 08

- In section '2. Setup and Auto-Start', added discussion about using start.prc to automatically start the Peck application whenever you insert your SD card.

2006 December 04

- In section '2. Setup', added discussion about installation order.

2006 October 24

- Updated figures to show capitalization of species common names.

2006 September 09

- Updated text and figures, replacing the old list icons with the new list selector.